

caracole

2015 ANNUAL REPORT



## STAFF

### Administration

*Executive Director*  
**Linda Seiter**

*Chief Financial Officer*  
**Mark McComas**

*Client Services Director*  
**Midge Hines LISW-S**

*Development Director*  
**Ellie Singleton**

*Operations Director*  
**Mary Lou Wolf**

*Finance Coordinator*  
**Daniel Leesman**

*Community Investment  
Coordinator*  
**Megan Green**

*Office Manager*  
**Dean Clevenger**

*Government Grants Manager*  
**Jen Ridenour**



Caracole's greatest resource: the talented and mission-driven staff.

### Client Services Staff

*Housing Services Manager*  
**Suzanne Moore**

*Clinical Supervisors*  
**Brent Hartke LISW-S**  
**Chrissy Rademacher LISW-S**  
**Ceilia White LISW-S**

*Interim Transitional  
Housing Manager*  
**Patty Davis**

*Transitional Housing  
Program Assistant*  
**Sarah Ridder**

*Case Managers*  
**Anne Balsley LSW**  
**Valerie Costello LSW**  
**Rob Goeller LSW**  
**John Guagenti MeD, LSW**  
**Phyllis Hayden LSW**  
**Linda Kokenge MSW, LSW**

**Rochell Kuhlman LISW**  
**Mary Kulakoski-Hoerr LISW-S**  
**April Martin MSW, LSW**  
**Mandy McNeely LSW**  
**Michael Volmer LSW**  
**Carolyn Yorio LSW**  
**Sophia Zapf LISW**

*Medical Care Coordinators*  
**Brandi Bailey LSW**  
**Bri'Ana Geans LSW**

*Case Aide & Intake Support*  
**Jeff Schlabach MA**

*Case Aide*  
**Katie Carman**

*Housing Specialists*  
**Ellie Logan**  
**Lydia Mahaney**  
**Vivian Watkins**

*Resident Assistants*  
**Ryan James**  
**Danielle Johnson**  
**Sunella Hunter**  
**Tina Neal**  
**Te'Cole Rasheed**  
**Sandy Reed**

*Housing Inspector*  
**Paul Gronneck**

*Interns*  
**Ashley Berkshire**  
**Genevieve Sofranec**  
**Katie Wiegand**

*Beagle*  
**Sally Crankshaw**

## BOARD OF DIRECTORS

*President*  
**Rick Kay**

*Vice President*  
**Stephen J. Peterson**

*Secretary*  
**Ron Clemons**

*Treasurer*  
**Don Clowe**

*Board Members*  
**B. Keith Blevins-Roberts**  
**Jay Brock**  
**Ina Broeman**  
**Wendy Carpenter**  
**Jeff Caywood**  
**Kathy Comisar**  
**James P. Conway, Jr.**  
**Danny Cox**  
**Christopher Deabler**

**Judith Feinberg MD**  
**Scott Getz**  
**John R. Gillespie**  
**Jim Goetz**  
**Sean J. Guilfoile**  
**Kelli Halter**  
**Jim Kelly**  
**Shannon King**  
**Rev. Jason Leo**  
**Pam McFarland**

**Frank McWilliams MD**  
**Ryan Messer**  
**Danuté Miskinis**  
**Joseph Previte MD**  
**Kent Shaw**  
**Michelle Watts PhD**  
**David W. Weaver**

---

## DEAR FRIENDS,

While preparing this Annual Report and looking back over 2015, we thought a lot about **cause and effect**. We are very accustomed to digging in and analyzing the outcomes—the **effects**—related to the services we provide to our clients. We do this to identify gaps in service, to recognize patterns that lead to success and to plan for the future. While reviewing our outcomes from 2015, we became curious to trace the lines back in order to acknowledge and celebrate all of the **causes** for the year's accomplishments.

Of course, the statistics presented in this document—the **effects** —are the direct results of the incredibly hard work of the nimble and skilled Caracole staff—their expertise and passion for this mission is second to none. We trust that our clients are in the very best hands possible. We also recognize the valuable contributions from the Board of Directors—our 30 member team provides strong support for the work we do within our walls and out in the community.

And at the very root of this, the **cause** that makes what we do possible, is YOU— Caracole's amazing and dedicated group of supporters—our network of friends, partners, collaborators and donors whose backing of the HIV+ community in our region is so strong.

When reviewing the following statistics, we were astonished. Seeing in black and white the number of households that supported us, the number of miles you walked in our 5K for AIDS and the number of Christmas trees you bought from our sale at Findlay Market— left us full of pride. Because without your support, Caracole would never have been able to expand from our first house in Clifton with four clients. Caracole would never have been able to step up and fill the void in service five years ago when Stop AIDS closed its doors. And without you, Caracole will not be able to face what's next. You have advocated for us, given of your finances, time and talents to better the lives of those living with HIV/AIDS in our community. And we are grateful.

Miguel de Cervantes once said, "Take away the cause, and the effect ceases." This rings very true for what we do. Without the support of our community, all of the encouraging progress for those living with HIV noted in this report will disappear. We cannot do this alone.

Thank you for affecting our cause.



A handwritten signature in black ink that reads "Richard L. Kay".

**Rick Kay**  
*President, Board of Directors*



A handwritten signature in black ink that reads "Linda Seiter".

**Linda Seiter**  
*Executive Director*

# ABOUT HIV/AIDS

HIV stands for **Human Immunodeficiency Virus**. HIV attacks and destroys the infection-fighting CD4 cells of the immune system. Loss of CD4 cells makes it difficult for the immune system to fight infections. The CD4 count of a healthy person ranges from 500 to 1,200 cells/mm<sup>3</sup>. AIDS stands for **Acquired Immunodeficiency Syndrome**. AIDS is the most advanced stage of HIV infection.

## How is HIV transmitted?

HIV is transmitted (spread) from one person to another through specific body fluids—blood, semen, genital fluids and breast milk. Having unprotected sex or sharing needles with a person infected by HIV are the most common ways HIV is transmitted. You can't get HIV by shaking hands, hugging or closed-mouth kissing with a person who has HIV. And HIV is not spread through objects such as toilet seats, doorknobs, dishes or drinking glasses used by a person with HIV. Although it takes many years for symptoms of HIV to develop, a person infected with HIV can spread the disease at any stage of HIV infection. Detecting HIV during the earliest stages of infection and starting treatment well before symptoms of HIV develop can help people with HIV stay healthy. Treatment can also reduce the risk of HIV transmission.

## What is the treatment for HIV?

**Antiretroviral therapy (ART)** is the recommended treatment for HIV infection. ART involves taking a combination (regimen) of three or more anti-HIV medications daily. ART prevents HIV from multiplying and destroying infection-fighting CD4 cells. This helps the body fight off life-threatening infections and cancers. Although antiretroviral medications can't cure HIV, people with HIV are enjoying healthy lives and living longer thanks to ART.

Ohio ranks 12th in the number of AIDS diagnoses in the country.\*  
35.4% of persons aged 18-64 in Ohio reported ever receiving an HIV test.\*

More than 21,000 individuals are living with the disease in Ohio.\*\*

More than 3,600 HIV+ individuals are known to be living in our community in Southwest Ohio.\*\*

Another 450 are estimated to be infected, but not yet diagnosed.\*\*\*

It is estimated that every other day someone in Southwest Ohio is newly infected with HIV.\*\*



Graphic representation of the Human Immunodeficiency Virus (HIV)

HIV belongs to the *Lentivirus* family in the Retrovirus genus. "Lenti" means slow—it takes years to make you sick; "retrovirus" means that the HIV genetic code is RNA, not DNA like humans, and has to be changed into DNA by a process called *reverse transcription* in order to infect us.

Once HIV has infected a cell, its main target is the CD4 lymphocyte, a critical white blood cell in our immune system. The immune system recognizes what is *foreign* and protects us from infections and cancers, which is why HIV can be such a devastating disease: it attacks the heart of the immune system.

\* Centers for Disease Control and Prevention (CDC)'s Behavioral Risk Factor Surveillance System 2014 Survey

\*\* Ohio Department of Health HIV/AIDS Surveillance Epidemiologic Report for Ohio 2015

\*\*\* Based on estimations from the U.S. Department of Health and Human Services

# ABOUT CARACOLE

Caracole's mission is to provide safe, affordable housing and supportive services for individuals and families living with HIV/AIDS.

Founded in 1987, Caracole was the first housing agency in the area for people living with HIV/AIDS. The first unit housed four clients and was essentially a safe haven for individuals with an AIDS diagnosis to be cared for until they passed away. Since that time, the disease and the diagnosis have changed drastically. Caracole now provides direct care services and housing to people with HIV/AIDS and their families along a continuum of care which includes four comprehensive housing programs as well as provides medical case management and pharmacy services to all eligible persons living with HIV/AIDS in the eight-county region. Caracole serves those living in Adams, Brown, Butler, Clermont, Clinton, Hamilton, Highland and Warren Counties in Southwest Ohio.

## Caracole House

Caracole House has been offering transitional housing and case management services for homeless, low-income adults living with HIV/AIDS since 1988. The House is a community of two, four-unit apartment buildings that can accommodate up to 16 individuals, each with a private bedroom within a three-bedroom suite. An evening meal is prepared for community residents and food is supplied for other meals. Clients at Caracole House receive intensive case management and referral services.

## Shelter Plus Care

Shelter Plus Care serves more than 150 clients, caregivers and children, making it Caracole's largest housing program. It is a rent subsidy program offering a permanent housing solution for homeless individuals and families with an adult member living with HIV/AIDS. Caracole provides case management and supportive services to help these individuals and families find and maintain safe housing, stay together and live as independently as possible.

## Permanent Supportive Housing

Permanent Supportive Housing is a rent subsidy program that serves HIV+ individuals who are considered by the U.S. Department of Housing and Urban Development (HUD) to be 'unstably housed'. Similar to Shelter Plus Care, in addition to the rental subsidy, clients in our Permanent Supportive Housing program also receive comprehensive case management and referral services.



Community members gather in Jacob Hoffner Park in Northside to commemorate World AIDS Day 2015.

## Short-term Rent, Mortgage and Utility Assistance

Short-term Rent, Mortgage and Utility Assistance (STRMU) is a short-term, needs-based intervention to prevent homelessness and promote housing stability for individuals living with HIV/AIDS in our region. The objective is to assist HIV+ individuals with housing costs and support during HIV-related financial crises.

## Medical Case Management

As part of our service-enriched programming, intensive case management services are provided to clients in all of Caracole's programs in order to help limit barriers to accessing care and stabilize and improve health and wellbeing while empowering clients to become independent and live with HIV/AIDS.

## Pharmacy Service

Our pharmacy service is convenient and confidential. Caracole partners with PharmBlue, a mail-order pharmacy that provides HIV and non-HIV medication to enrolled clients with automatic monthly refills and a 24/7 pharmacy help center. Through this service established by the 340B Drug Pricing Program, Caracole is able to offer co-pay assistance to all eligible clients.

# 2015: THE “CAUSES”

## Our top-notch staff and generous supporters ...

- 45 staff members
- 1,252 households
- 50 corporations
- 39 nonprofit partners
- 34 community groups
- 27 bars and restaurants
- 19 foundations
- 14 religious organizations
- Individuals from 21 different states

## worked, ran, walked, partied, advocated, danced, bought, donated, shared and volunteered ...

- 31% of those who made a donation (cash or in-kind) to Caracole were NEW to the agency.
- 1500.4 miles were covered in our 5K for AIDS—that’s approximately the distance from Miami, Florida to Boston, Massachusetts.
- 612 volunteers donated 6185.5 hours of their time to help Caracole accomplish our mission.
- 383 Fraser Firs and 60 Scotch Pines were purchased at our Annual Tree Sale, helping to raise \$10,000 for Caracole’s mission.
- 505 plaid-clad guests enjoyed the fun at *Party in Plaid and Paisley*.
- 28% of donors to Caracole in 2015 have been supporting our mission for 10 or more years.
- \$12,043 was raised at drag shows (\$1 at a time!) to support Caracole.

# & THE “EFFECTS”

## so that Caracole could...



help 742 clients to access vital medications.



provide transportation assistance to clients in the form of 1,879 bus passes, 241 bus transfers and 323 gas cards.



assist 80% of Caracole clients (for whom viral load information was available) achieve a suppressed viral load.



facilitate access for 223 individuals/families to \$366,447.12 in federal Ryan White Funds to cover the cost of insurance premiums.



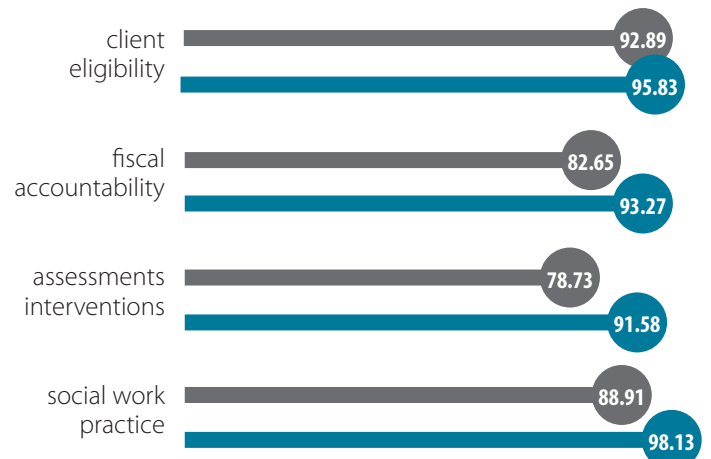
house 145 homeless, HIV+ clients and their 29 household members in our Shelter Plus Care program.



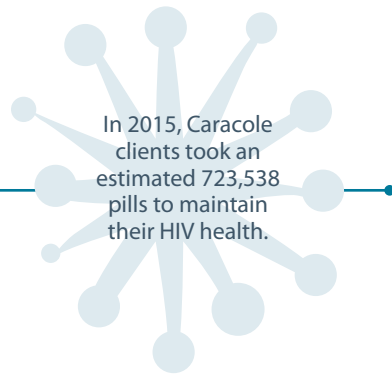
help 69% of clients in our Caracole House program increase or maintain income at exit.

## Caracole’s outcomes significantly exceed those of other state programs.

- State of Ohio AIDS service organization average % score
- Caracole % score



Results from 2015 Clinical Audit from the Ohio Department of Health



In 2015, Caracole clients took an estimated 723,538 pills to maintain their HIV health.

## PRESCRIPTION ASSISTANCE

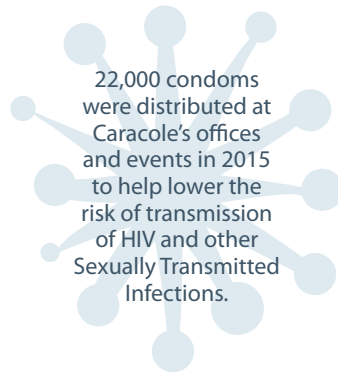


### 2015 Caracole 340B Pharmacy Service

- 132 clients filled prescriptions via Caracole's pharmacy service.
- 5,559 total prescriptions were filled via Caracole's pharmacy service.
- The cost to clients through this program was \$0.
- Caracole covered \$204,395 in co-pays for these clients.

"Take away the cause, and the effect ceases."

— Miguel de Cervantes



22,000 condoms were distributed at Caracole's offices and events in 2015 to help lower the risk of transmission of HIV and other Sexually Transmitted Infections.

## Yearly income of Caracole pharmacy service enrollees

| Income Category | Percentage | Notes                                                                                                                                                                                                                                                   |
|-----------------|------------|---------------------------------------------------------------------------------------------------------------------------------------------------------------------------------------------------------------------------------------------------------|
| No Income       | 15%        | Clients in these categories are able to receive assistance from the Ohio HIV Drug Assistance Program (OHDAP), but the State's formulary is limited, and these clients are able to use Caracole's pharmacy to fill scripts not on the State's formulary. |
| \$1-3,000       | 1%         |                                                                                                                                                                                                                                                         |
| \$3,001-9,000   | 9%         |                                                                                                                                                                                                                                                         |
| \$9,001-15,000  | 18%        |                                                                                                                                                                                                                                                         |
| \$15,001-24,000 | 26%        |                                                                                                                                                                                                                                                         |
| \$24,001-35,000 | 15%        | Clients in these categories are not eligible for drug assistance from OHDAP.                                                                                                                                                                            |
| \$35,001-50,000 | 14%        |                                                                                                                                                                                                                                                         |
| \$50,000+       | 2%         |                                                                                                                                                                                                                                                         |

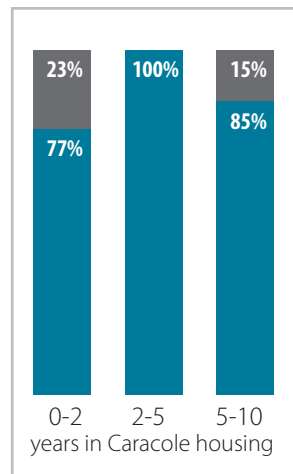
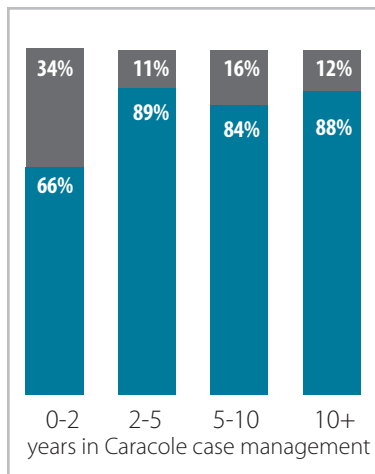
Within the last 3 years OHDAP has changed the guidelines for eligibility in their drug assistance program – raising the income requirement from 300% of the Federal Poverty Level (FPL) to 500%.



Caracole staff members help sort a generous donation of personal care items for clients.

## VIRAL LOAD SUPPRESSION

- % of clients reported virally suppressed\*
- % of clients reported *not* virally suppressed\*



## And, thanks to your in-kind donations ...

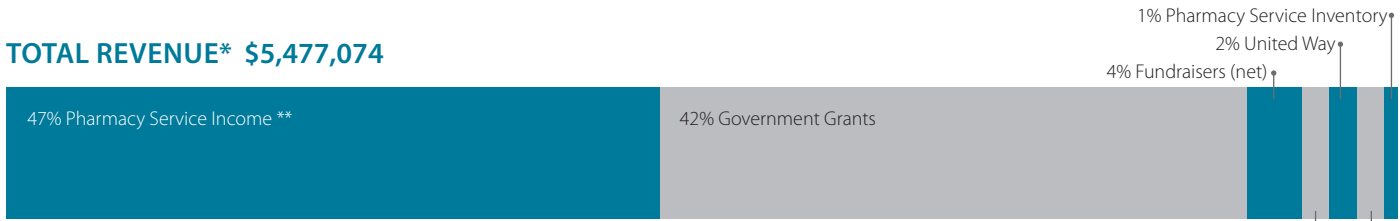
the following gifts were distributed to Caracole clients:

|                    |       |                                |         |
|--------------------|-------|--------------------------------|---------|
| Toilet paper.....  | 5,015 | Facial tissue.....             | 253     |
| Paper towels.....  | 384   | Lotion.....                    | 1,314   |
| Toothpaste.....    | 984   | Dish soap.....                 | 92      |
| Shampoo.....       | 1,053 | Laundry detergent.....         | 705     |
| Floss.....         | 193   | Sheet sets.....                | 48      |
| Mouthwash.....     | 139   | Blankets.....                  | 29      |
| Body wash.....     | 452   | Feminine hygiene products..... | 2,893   |
| Conditioner.....   | 481   | Cleaning supplies.....         | 110     |
| Razors.....        | 1,548 | Gift cards.....                | \$6,180 |
| Shaving cream..... | 157   | Misc. Items.....               | 5,961   |
| Deodorant.....     | 594   |                                |         |

\*Percentage of clients for whom viral load information was available

# FINANCES

## TOTAL REVENUE\* \$5,477,074



## TOTAL EXPENSES\* \$5,192,484



## Net Assets as of 12/31/2015

|                                               |                     |
|-----------------------------------------------|---------------------|
| Unrestricted and Temporarily Restricted ..... | \$455,163*          |
| Endowment Fund (Donor-Designated) .....       | \$15,938*           |
| Endowment Fund (Board-Designated).....        | \$1,185,275*        |
| <b>TOTAL NET ASSETS.....</b>                  | <b>\$1,656,376*</b> |

|                                                        |           |
|--------------------------------------------------------|-----------|
| Percent of expenses for administrative costs.....      | 8%        |
| Percent of expenses for program costs.....             | 92%       |
| Net Operating Gain/Loss Before Depreciation .....      | \$284,590 |
| Net Operating Gain/Loss After Depreciation (Est.)..... | \$255,519 |

\* Unaudited figures for year ending December 31, 2015  
 \*\* Pharmacy Service gross amounts; expenses under Case Management include \$1,919,904 pharmacy costs and \$204,395 co-pay assistance



Members of the Caracole crew at the 2015 Cincinnati Pride Parade.



Caracole friends enjoy a fun evening at *Party in Plaid and Paisley* while supporting the mission.



Contestants vie for the crown in the 2015 Miss Northside Drag Pageant.



# OUR CLIENTS

In 2015, Caracole served 1,426 clients.

2,075 red ribbon pins showing support for those living with HIV/AIDS were distributed at our events in 2015.



Volunteers help to make our 5K for AIDS a success.

## Race

|                                      |     |
|--------------------------------------|-----|
| African American                     | 785 |
| White/Caucasian                      | 536 |
| Hispanic/Latino                      | 37  |
| Mixed Race                           | 32  |
| Native North American                | 21  |
| Asian                                | 12  |
| Unknown                              | 2   |
| Native Hawaiian/<br>Pacific Islander | 1   |

## Gender

|             |      |
|-------------|------|
| Male        | 1096 |
| Female      | 306  |
| Transgender | 24   |

## Age

|       |     |
|-------|-----|
| 0-17  | 12  |
| 18-24 | 122 |
| 25-39 | 458 |
| 40-59 | 720 |
| 60+   | 114 |

## Income

|                 |     |
|-----------------|-----|
| No income       | 419 |
| \$1-3,000       | 30  |
| \$3,001-9,000   | 264 |
| \$9,001-15,000  | 298 |
| \$15,001-24,000 | 272 |
| \$24,001+       | 143 |

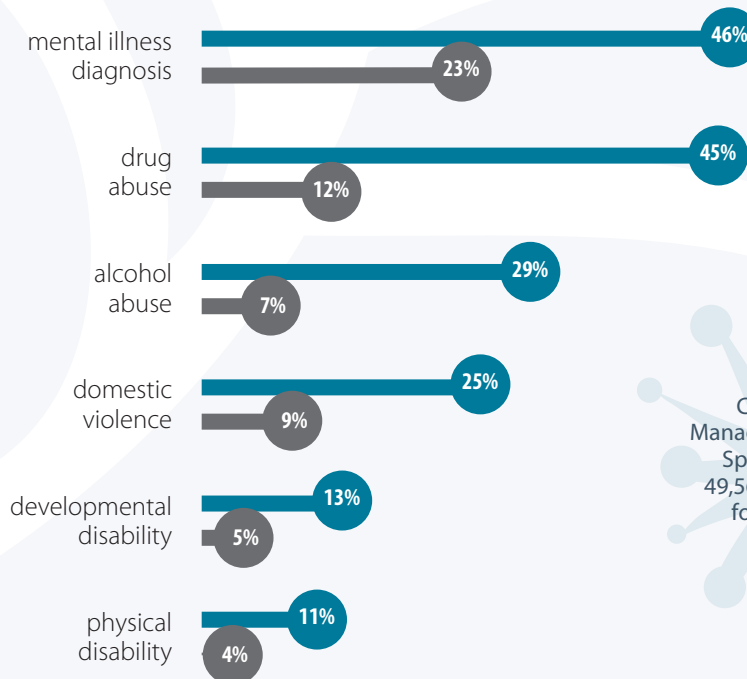
## Reported Infection Source\*

|                                 |     |
|---------------------------------|-----|
| Men who have sex with men (MSM) | 881 |
| Heterosexual                    | 505 |
| Injectable drug user (IDU)      | 38  |
| Hemophilia                      | 2   |
| MSM IDU                         | 2   |
| Sexual abuse                    | 19  |
| Mother to child                 | 15  |
| Sex with IDU                    | 12  |
| Blood products                  | 10  |
| Women who have sex with women   | 5   |
| Health care worker              | 6   |

\*Clients may be reported in more than one category.

## Reported Barriers

● in Caracole's HOUSING programs  
● in Caracole's CASE MANAGEMENT program



\*Clients may be reported in more than one category.

Caracole Case Managers and Housing Specialists drove 49,565 miles in 2015 for client visits.

# OUR DONORS

This list reflects all donations received between January 1, 2015 and December 31, 2015. If we have inadvertently missed your name, we apologize. Please bring it to our attention and we will correct our error in future publications.



## GOVERNMENT GRANTS

\$25,000+  
City of Cincinnati  
Ohio Department of Health  
Ohio Development Services Agency  
U.S. Department of Housing and Urban Development

## LEADER LIVING CIRCLE

\$40,000+  
United Way of Greater Cincinnati

## DIAMOND LIVING CIRCLE

\$20,000-\$39,999  
M•A•C AIDS Fund  
Macy's  
The Spaulding Foundation

## PLATINUM LIVING CIRCLE

\$10,000-\$19,999  
An Anonymous Friend  
Carol and Steve Boymel  
Broadway Cares/Equity Fights AIDS  
I.S.Q.C.C.B.E.  
The P&G Fund  
William D. Stenger  
The Wohlgemuth Herschede Foundation

## GOLD LIVING CIRCLE

\$5,000-\$9,999  
An Anonymous Friend  
Ina Broeman  
Ethicon Endo-Surgery, Inc.  
The Gay & Lesbian Center of Greater Cincinnati  
Mary and Jon Gimpel  
Mark Haggard and Dan Brown  
Rick Kay and Jim Kelly  
Mannequin Boutique  
Mercy Health  
TJX Foundation  
ViiV Healthcare  
Ginger Warner

## SILVER LIVING CIRCLE

\$2,500-\$4,999  
Wendy and Scott Carpenter  
Freeman Durham and Dean Clevenger  
Goodwin Lighting Services  
Kathy Hamm  
David C. Herriman  
Lauren Hannan Hudson  
Ellen and Garrett Jackson  
The Kroger Company  
Peter Landgren and Judith Schonbach  
Eric D. Lindsey  
Macy's Matching Gifts Program  
Bernard McKay and Zack Weber  
Stephen J. Peterson and Christopher Bolling  
Joseph Previte and Andrew Bell  
J. Erin Riehle and Judith McBride  
Digi and Mike Schueler  
Linda Seiter and Chuck Brown  
The Southgate House Revival  
Toyota Motor Engineering & Manufacturing North America, Inc.

## BRONZE LIVING CIRCLE

\$1,000-\$2,499  
Raye Allen  
Ellen Harte Baker  
Ron Bates and Randy Lasley  
David C. Beck and Ronald P. Beck  
Calvary Episcopal Church  
Jeff Caywood and Rob Neel  
Christ Church Cathedral  
Cincinnati Playhouse in the Park  
Don Clowe  
Mary Ellen and Tom Cody  
Michael Connley  
Ellen Dick  
Carol and Victor Dipilla  
Kevin Downey  
Chris Edwards  
Jerry Ershun  
Rob Feltovich  
Fifth Third Bank  
Fort Washington Investment Advisors  
Jonathan C. Garrison and James M. Krumme  
GE Foundation  
Tim Giglio  
Christine and John Gillespie  
Elizabeth Jackson Glass and Kevin Glass  
Jim Goetz and Harry Budke  
Kelli Halter and Mark Masters  
J. Thomas Hemmer  
Imperial Court Daughters Scholars  
Thomas Jenkins  
Suzanne and William Joiner  
Thomas Klinedinst  
Scott Knox and Ray Pater  
Richard Kroeger and Clarence Heis  
Levi Strauss Foundation  
Marsha and Brad Lindner

LPK  
Fred Martens and Warren Liang  
Daniel and Elizabeth McMullen  
Joe Mendelsohn III Fund of Greater Cincinnati Foundation  
Mark Mikulski  
Danuté Miskinis  
John and Sheri O'Flynn  
Old Street Saloon  
Thomas S. Owen  
Park National Bank  
Morry and Pat Passer  
PNC Bank  
Frank Prudent and Charles Jordan  
Cyril W. Puthoff  
Catherine and Stephen Rabe  
Saundra Reed  
James Riley  
Richard D. Robertson Jr. and James Conway, Jr.  
Joan and Alvin Roehr  
Jack and Moe Rouse  
Spiros Sarakatsannis, Jerry Freed and Alex Smith  
Scorpius of Cincinnati  
Kent Shaw and Jeff Thomas  
Victoria Stefanko  
The Huntington National Bank  
Thendara Foundation  
Upstream 360  
Robert Weingartner  
Maureen and Raymond Whitehead

## BENEFACTOR

\$500-\$999  
An Anonymous Friend  
Arnold's Bar and Grill  
Laura and George Babcock  
Stephen Blatt M.D.  
Kevin M. Boyle and Douglas S. Kennedy  
Jon Bragg  
Robert A. Buster  
James Chappelle and Michael Dermott  
Joe Cirillo  
Elizabeth Clark and Tariq Siddiqi  
Charles and Jacqueline Collins  
Audrey and Charles H. Comins  
Christopher and Ionela Deabler  
Joseph T. Dickow  
David Durkalski  
Rob and Swany Fetters II  
Bryan Foltz  
Peter and Betsy Frame  
Debbie Gerdes  
William Scott Getz  
Green Dog Cafe  
Jill Guilfoile  
Amy and Frank Hanson  
Ronald Hill  
Timothy Hittle  
Tori Houlihan

Jennifer Huggins  
Doug Ignatius and Bruce Preston  
Scott M. Jackson  
Joffe Foundation  
Shannon and Bradley King  
Lakeview United Church of Christ  
David Maschinot and Corwin S. Johnson  
Judith McBride  
Ryan Messer and Jimmy Musuraca-Messer  
Patricia Messmer and Daniel Goetz  
Miller Valentine Walsh Fund  
Janet M. Neumann  
Lawrence Newman and Bruce Palmer  
Terry Richards  
Jay L. Shatz and Stan Elliott  
Ellie and Matt Singleton  
Sisters of Charity of Cincinnati  
Kevin Stout  
The Gathering at Northern Hills  
Unitarian Universalist  
UC Academic Health Center  
Sherman Ward III  
Michelle Watts  
Phillip Weintraub and Bruce Lazarus  
David White  
Michael White  
Susan Whitesell  
Barbara S. Wright  
Kai and Lloyd F. Zacharias III  
Theodore B. Zeh Jr. Giving Fund  
Sandra Ziegler

## PATRON

\$250-\$499  
An Anonymous Friend  
21c Museum Hotel Cincinnati  
Janet and Roger Ach  
Richard H. and Barbara Allen  
Linden Ard  
Jessica and Bob Baron  
Wilford Lloyd Baumes  
Donald Beck and Lawrence Eynon  
Amanda Beck-Myers  
Below Zero Lounge  
Nate Bishop  
Dabby Blatt  
Paula Braverman  
Nancy and Thomas Brinker  
John Craig Brinkman  
Robert M. Brockman  
Trish and Rick Bryan  
Richard Buchanan  
Dan Burr  
Michael D. Butler  
Sue Butler  
Tim Cagle and Richard Kammerer  
Linda and George M. Callard  
Adam Case and Mike Volmer  
Cincinnati Health Network  
Virginia Clark



Plaid- and paisley-clad guests show their support of the HIV+ community.

Danny Cox  
 Patty and Tim Crotty  
 Tina Ellis  
 Marguerite Fatheree  
 Judith Feinberg  
 Deborah Finlay  
 Kelli Fleisch and Karen Permenter  
 Fleming Road United Church of Christ  
 Allen Fleury  
 Martin Fritzhand  
 The Irene Emery Goodale Foundation  
 Bryan Goodpaster  
 Madeleine Gordon  
 Kenneth Griffiths  
 Paul Gronck and Steve Hebling  
 Guy and Karen Guckenberger  
 Sean Guilfoile and Daniel Shiveley  
 Lisa Haglund and Steven Slack  
 Jolie Harris and Steve Russell  
 Marcellus Harris  
 Brent Hartke  
 Elizabeth Hauntz  
 Neil Hoover  
 James A. Huenniger and Shane Qualls  
 Mary Ivers  
 Thomas M. Jackson and Sally Krisell  
 Matthew Jester  
 Kay A. Johnson and Greg Rouan  
 Alan Kastner and Art Hasinki  
 Robert Keck  
 Thomas Koeninger  
 Robert Lee  
 Corinne Lehmann and Jon Calderas  
 Mary J. and Alfonso P. Lopez  
 Pam McFarland  
 Alan McIntire  
 Frank and Janna McWilliams  
 Scott Monnin  
 Suzanne Moore  
 Marjorie Motch  
 New Mission Baptist Church  
 Jeffrey Niemes and Craig Cooper  
 Janet and William Oligee  
 Randall and Marianne Olson  
 Francie and John E. Pepper  
 James R. Percival and Scott Robinson  
 Prestige AV & Creative Services  
 Mary F. Quinn  
 Peter C. Quinnan and Mark T. Boire  
 Red Party  
 Jen Ridenour  
 Richard Ross  
 Patrick Russell  
 Michelle Ryan  
 James and Vivian Schwab

Dan Schwander and Dave Allen  
 Tamara Schwarting  
 Shawn Scott  
 James Shanahan  
 Erin Sharp and Gloria Mitch  
 Michael P. Skidmore  
 Randy Slovin  
 Eric J. Söderlund and Matt Shad  
 David and Janice Stockton  
 Isabelle Thomas  
 Terry C. Tracy  
 Unwind, Inc.  
 Washington Platform, Inc.  
 Trish and Ron Weeks  
 Sallie E. Westheimer and Gregory Rhodes  
 Chiquita White  
 Whitmer & Company  
 Deborah Williams  
 Shannon Yoho  
 Alison and James Zimmerman

**SPONSOR**

\$100-\$249  
 An Anonymous Friend  
 Chip Ach  
 J.W. and Marlin Ach  
 Rena Alex  
 AmazonSmile  
 American Express Company  
 Employee Giving Program  
 Jane Anderson  
 Linda D. Arnest  
 Patricia and Lewis Assaley  
 Damon Babbage  
 John and Martha Babinski  
 Anne and Brian Balsley  
 Gene Barber and Ray Brown  
 Amy Barhorst  
 Sandra Barta  
 Michael Bauschelt  
 Robert D. Beck  
 Donna Becker  
 Barbara and Wayne Beimesch  
 Bella Luna  
 J. Timothy Benton  
 Andrew and Cynthia Berman  
 Philanthropic Fund  
 George Bible and Miriam Hill  
 Harry Blanton  
 John Boggess  
 James and Elizabeth Bolling  
 Susan Bolton  
 Tracie Bonet  
 Patricia C. Borne  
 Alex and Ashlee Boymel

Gerald and Andrea Breen  
 Thomas and Margaret Breidenthal  
 Kathleen and George Brinkman  
 Jay Brock  
 Cheyenne Brown  
 Tia Brueggemann  
 John P. Bruggen  
 Teresa Bryant  
 Jacklyn Bryson  
 Dennis Buttelwerth  
 James W. Calhoun  
 Barbara Cappel Green  
 Patricia M. Carey  
 Brian Carson  
 Shannon and Kevin Celarek  
 Pauline and Barry Childs  
 Edmund Choi and Kieran Daly  
 Mary W. and Michael A. Clauder  
 David Clements  
 Ron Clemons  
 Kathy Comisar  
 Tom Conway  
 Martha and J. Paul Conway  
 Mark Cook  
 Valerie Costello  
 Christie Crawford Savage  
 Barbara A. Culver  
 Philip Cunningham  
 Elizabeth Dallman and Samir Patel  
 Walt and Natalia Darling  
 Daveed's  
 Johnie and Kenneth Davis Jr.  
 Kathy Davis  
 Kenneth A. Day  
 Dennis DeClaire and Collin Nealey  
 Harold Delph  
 Grace Denman  
 Jacob Drabik  
 Myndi Dragoon  
 Denise Driehaus and Mark Childers  
 Sandra C. Driggins-Smith  
 Wesley R. Duncan and Terrell Lackey  
 Cheryl J. Eagleson  
 Judy Ellis  
 Vickie and Bruce Ellis  
 Nancy and Rick Fehr  
 Theodore Feig and Nancy Roach  
 Jane Felson Brown  
 Carl J. Fichtenbaum and Mary Beth Donica  
 Theresa and Mike Flaherty  
 Andrew and Ethan Fletcher  
 David Foote  
 Lorna Frank  
 Caryn Franklin  
 Christy Galioto and Lillian Dempsey

Gannett Matching Gifts Center  
 Lissa Urriquia Gapultos  
 Al Gerhardstein  
 Ginny and Dennis Gesenhues  
 Robert A. Goldberg  
 Faith and Sylvan Golder  
 Lynne Meyers Gordon M.F.A.  
 Eric Gorny  
 Kevin Graveline  
 James H. Gray  
 Vince Greco  
 Megan Green  
 Jeff Gronck  
 John and Sue Guagenti  
 Timothy Guilfoile  
 Jeff and Pam Halter  
 Bruce Hamilton and Roxanne Hamilton  
 Jeanne and Richard Hannan  
 Andrew W. Hargis  
 Christine M. Harris  
 Kate Harrow  
 Dennis and Shirley Hartke  
 Emma D. Hartkemeier  
 Dennis Hattie  
 Mary Heider  
 Lynn M. Herman and Connie Frick  
 Midge and John Hines  
 John Hinger  
 Florette Hoffheimer  
 Mickey Hoffman  
 Ron A. Houck  
 Doreen Houston  
 Steven L. Howe  
 Howell Avenue Pet Hospital LLC  
 HP Company Match  
 Danielle Ivory  
 Sean Johnson  
 Laura Johnson  
 Mary Beth Johnson and Steven Matijcio  
 Chip Jones  
 John W. Jones  
 Thomas W. Jones Jr.  
 Elizabeth Kaiser  
 Kathy Kane  
 Lynne and Robert Kanter  
 Linda Kesterson  
 Joe Kiesler and Bruce Giffin  
 Kitchen 452  
 Kim Kline  
 Mari Knight  
 Patsy and Barry Kohn  
 Patrick Korb  
 Daniel Korman  
 Rochell Kuhlman  
 Andy LaBarbera and Craig Highberger

Roger D. Lambert  
 Jerry Lawson and Barb Rinto  
 Jason and Jeannie Leo  
 Patsy Leo  
 Thomas Levack and Sarah Jane Bellamy  
 The Littlefield  
 Dave and Abby Lockard  
 Whitney and Phillip Long  
 Susan and Jack Louiso  
 Scott Lundgren  
 Brad S. Lutz  
 Bobbie and John MacLeod  
 James R. Magee  
 Main Bite  
 David and Elizabeth Mann  
 Virginia Mannon  
 Sanford Martin  
 Kris and Christine Mayhew  
 Carole McCauley  
 Janice M. and Brian J. McConville  
 Molly C. McEvilley  
 Mary Carol and John Melton  
 Ann Meranus  
 Fred Middendorf  
 Gerald M. Miller and Jim Pater  
 Greg and Bryna Miller  
 Jean Miller  
 Linda and Jim Miller  
 Tammy Miller Wohl  
 Jessie and Geoff Modderman  
 Robert Moore and Bavi Rivera  
 Benjamin and Andrew Morano  
 Robert Moreland  
 Larry Mosteller  
 Regine Moulton  
 Dale and Mary Pat Mullaney  
 Jane and Kevin C. Murphy  
 Barbara K. Myers  
 Thomas Neubecker  
 Steven Nichols  
 Daniel Nolan  
 Northsidian Solstice Society  
 Pat O'Connor  
 Brett Offenberger and Doug Duckett  
 Whitney O'Neal  
 Don Pamperin  
 Giles H. Pater  
 M. Francoise Payen-Healy and Jim Healy  
 Burton and Alice Perlman  
 Philippus United Church of Christ  
 Penny Poirier and Tim Smith  
 Sara Powell  
 Nicholas Puncer  
 David and Amy Purcell  
 John Purk  
 Doreen Quinn Trust  
 Margaret Quinn  
 Francisco and Chrissy Rademacher  
 Toni and Randy Ridenour  
 Thomas Ridgeway and Lawrence Johnson

B. Keith Roberts  
 Martin Roberts  
 Erik Roddy  
 J. David and Dianne Rosenberg  
 Phil Rundle  
 Ralph Salloum  
 Rina Saperstein and Jeffrey Davis  
 Brent Scarlett  
 Jeffrey and Karen Schellinger  
 Kathy Schellinger  
 Peggy Scherer  
 Sarah and James Schloss  
 Bruce Schoolfield  
 Rebecca S. Seeman and David Wood  
 Jean Sepate and Peter Djuric  
 Gale Sequeira  
 Julie Shaffer-Boggano  
 Jeanne and Christopher Sheldon  
 Alan Shukairy  
 Paul G. and Elizabeth C. B. Sittenfeld  
 Barry and Mary Smyth  
 Alison Sobowale  
 Richard P. Spare  
 John Sper  
 St. John's United Church of Christ  
 St. John's Westminster Union Church  
 Howard and Nancy Starnbach  
 Carol Steger  
 Thomas Stein  
 Robert W. Stewart  
 W. Gene Story  
 Robert Summe  
 Stefanie Sunderland  
 Scott Swan  
 Jeanette Tepe  
 Renate and Anthony Thomas  
 Marvin Tibbetts  
 Nina and Howard Tolley  
 Bill Toth  
 Renee and Steve Townley  
 Karen Tully  
 Frances B. Turner  
 Phil Tworek and Tom Umfrid  
 UBS Employee Giving Program  
 Randy James Ulses  
 US Bancorp Foundation Matching Gift Program  
 Priscilla Walford  
 Kathleen and Peter Walzer  
 Mark Wert and Mark Johnson  
 Ceilia White  
 Melissa Wideman  
 Patti and Brandon Wiers  
 Brandon Willoughby and Josh McGimsey  
 Andrea Wiot  
 Rabbi Irvin M. and Kathy Wise  
 Martha J. Wolf  
 David R. Woodside  
 Mary Yorio  
 Carolyn and A.J. Yorio  
 Sophia Zapf

**SUPPORTER**  
 \$50-\$99  
 An Anonymous Friend  
 Allan Acheson  
 George W. Alexander Jr.  
 Lucy Allen  
 Romola Allen  
 Julia Anderson  
 Carol N. Aquino  
 Joyce W. Asfour  
 Helene and Bruce Ault  
 Kimberly Austin  
 Cindy J. Bachurski  
 Julianna Bailey  
 Dave and Connie Berkemeier  
 Marianna Bettman  
 Reuben Blair  
 Ms. Annamarie Borich  
 Sandra and David Bowen  
 Steve Bowling  
 Forrest Brandt and Kathleen Wade  
 Melinda Brearton  
 Brian Bresser  
 Aggie Broker  
 Emily Brown  
 Peter N. Brumm  
 Curt and Marilyn Bubel  
 Don Busemeyer and Beth Talbert  
 William Cannon  
 Sandy Cappel  
 Nicholas J. Chaparos  
 Ann M. Chisko  
 Jim and Connie Clevenger  
 Phillip W. Click  
 Matthew Collins and Linda Kocis  
 Nancy Jean Colucci  
 Karen Congdon and Olivia Sweet  
 Laura Conley  
 Randy Cook  
 Robert Cornuelle  
 Karissa Cox  
 Tamra and Shane Craycraft  
 Katherine Crossen  
 David Crowe  
 John Cuppoletti  
 Lysbeth Curtis  
 John and Nanci Davis  
 Paul and Linda Davis  
 Rafael and Kimberly De Acha  
 Natividad DeJesus  
 Frank Dempsey and Hank Dimezzes  
 Douglas Dennis  
 Elizabeth Draper and Brian Fields  
 Nancy Drexel  
 Bill Dunleavy  
 Mike Dunn  
 Lori Elliott  
 Merry Ewing  
 Barbara A. Feldmann  
 Kimberly A. Fennell

Susan and Charles Fisher  
 Regina Ford  
 Michael and Maddie Forrester  
 Thomas D. Freeman and Doug Klocke  
 The Arthur J. Gallagher Foundation  
 Debbie and Bruce Gallo  
 Virginia S. Gandy and Pam Jacobson  
 Judith Gardner  
 Gary L. Gilmer  
 Gary and Susan Givler  
 Mona and George T. Glover  
 Rob Goeller  
 Ryan Goellner and Matthew Williams  
 Lauren Grannen  
 Stephanie Graves  
 Paula and Walter Green  
 Stephanie Green  
 Thomas Grogan  
 Jack Gross  
 Robert Guenther and Mike Dennett  
 Rev. Keith M. Haithcock  
 Jon M. Hargett and William Carson  
 Melvena Harris  
 Kara Harvey  
 Robert and Natalie Hauck  
 Phyllis Hayden  
 Cristina Heise  
 Joseph and Marilyn P. Hirschhorn  
 Teri and Kenneth Hiudt  
 Matt and Deborah Holbrook  
 Ruth and Fred Holt  
 Dan Howell  
 Mark Hudson  
 Shaan Husain  
 Jurena K. Jackson  
 Faye Jamison  
 Karen Jones  
 Heidi Jost  
 Joseph and Noel Julnes-Dehner  
 Ted Kauflin  
 Dick and Lois Kay  
 James and Dorothy Keith  
 Christina Kelley  
 Tina Keough  
 Thomas Kimmitt  
 Kurt Kishler  
 Evie Koehl  
 Mary Ann Kokenge  
 Jerome Kramer  
 Regina P. Kuhns and Ron Pinkerton  
 David Kundrat  
 Richard and Susan Lauf  
 Lynne and Kent Lefebvre  
 Linda S. Leslie  
 Andrea E. Lippelman  
 Corrie Loeffler  
 Sarah and Matthew Long  
 Crystal Loomis  
 Carlos Lopez  
 Art and Sue Lynch

Scott MacEachen  
Tommy MacFarland  
Lydia Mahaney  
Tina Manning  
Jamie Markle  
April Martin  
Vickie and Kelly Martini  
Dennis McCann  
Elizabeth McCarty  
Jaime McCauley  
Jacquelyn McCray  
John P. McDonagh  
Kam McKenzie  
Mary and John R. McKnight  
Jennifer Meek and Konstantin Vesserman  
Steph and Jim Meinberg  
Claire and Brandon Mello  
Chris Mellor  
Jackie and Mitchell S. Meyers  
Charyl Mikles  
Joe Miragliotta  
Peg Moertl  
Steven Mombach  
Marchelle Montgomery and Tammy Bowman  
Terry Morris  
Vicky and David Motch  
Katharine Nemeth  
Northside Tavern  
Staci O'Leary  
Jonah Otchy  
Liana Owens and Anna Wilson  
Richard Palmer  
Amy Pape  
Linda J. Parker and Kent Koefler  
Dorcas Patten  
Tammy Patton  
Cassie Peluso  
Julie Phalen  
William Porter and J. David Simon  
Sue and Jay Price  
Michael D. Privitera and Marcia Kaplan  
Roxanne Qualls  
Jared Queen and Matthew McFee  
Deborah and William Cates Rambo  
Alison Ramundo  
Jacob and Christy Rebholz  
CJ Reese  
Phyllis Reid  
James Reynolds  
Christine Rice  
Kim Richards  
Sarah Ridder and Stephen Cox  
Erica Riddick  
Nick Ridenour  
Zachary Ridenour  
Nancy Roach and Kellee Lawler  
Adam Roberts  
Henrita and John Rosenthal  
Connie Rosselot  
Jennifer Roth

C.T. Royalty and A.J. Asimus  
Eric and Maria Rufe  
Paul J. Samuels and Lisa M. McMillan  
Daniel Scheiman  
Jeff Schlabach  
Laura Schreibeis  
Louis and Chris Schroder  
Toby Schuler  
Jan Schumer  
Katie and Greg Schwehm  
Geraldine Sherrer  
Elizabeth Sherwood and Tina Stoeberl  
Susan Shmalo  
Karen and Daniel Siegfired  
Mary Skahan  
Christa Skiles  
Barbara Smith  
Kayla J. Springer  
Scott Steger  
Evelyn M. Sten  
Tom Stettner Jr.  
Steve Story  
Rachel Strasinger  
Maria Sulcer  
Julie Sullivan  
Laura Sullivan  
James R. Swearingen  
Barbara Syphax  
Joanne Thiemann  
Caitlin Thomas  
Elizabeth Travis  
Emily Trimble  
Elizabeth R. Vallano  
Harry Voll Jr.  
Stella Volmer  
James M. Wagner  
John W. Warrington Jr.  
Charles and Constance Washam  
Vivian Watkins  
Terry Wellman  
Jeffrey West  
Tom Wetzell and Jim Hellyer  
Carolyn Wetzell  
Joshua Williams  
Lawrence and Deborah Williams  
Matt and Megan Williams  
Mauri Willis  
Rev. Barry Windholtz  
Russell Winters  
Melissa Woods  
Anne L. Wright  
Megan Zarnitz  
Steve and Suzanne Ziegler  
Lisa Zito

#### **FRIEND**

\$1-\$49

An Anonymous Friend  
Susan Adams  
Judith Adjei-Danso

Anthony Adkins  
Chaquay Allen  
Kendra Allen  
Kristi Allen  
Meradith Alspaugh  
Rachel Ancona  
Brian Anderson  
Lou and Judy Arnette  
Paula Ayers  
Toni and Kevyn Babbitt  
Linda M. Backscheider  
David Barge  
Stephanie Barnard  
Krissi Barr  
Rick Barron  
Key Beck  
Brenda Beckwith  
Mary Beckwith  
Jerry Bedford Jr.  
Susan Bell  
John Berger  
Paul Bergman  
Jenny Bien  
Lisa Bien  
Amanda Blue  
Robert Blum  
Terryn Bolin  
Tom Borchert  
Renee Bornemann  
Josh Bort  
Carl Bostick  
Cynthia H. Bourgeois  
Robert W. and Mary L. Bowling  
Julia Boyajian  
Denise Bragg  
Sharon Bresser  
Robin Brewer  
Dennis Bridges  
Leah Camp  
Hannah Campbell  
Leslie Cannon  
JoAnne Carey  
Michele Carey  
Hollis Carlton-Ford  
Amy Carter  
Sarah and John Carter  
Laura Cash  
Susan Chalk  
Tiara Chambers  
Rick Chenutte  
Sara Chesterfield  
Steven and Christina Chowning  
Liz Chumtong  
Silva Church  
Kathy and Louis Claybon  
Beth Coburn  
Bruce Coburn  
Erin Coburn  
Christopher and Logan Comstock  
Lee Ann Conard

Karen Cormier  
Katie Couzins  
Cameron Cox  
Lucy Crane  
William and Marilyn Crankshaw  
Susan D. Cranley  
Tom Crawford  
Matthew Cullinan  
Christa Curfiss  
Ellen Current  
Caroline Daley  
Clarissa and Julian Daley-Messick  
Daniel B. Davies  
Mark Davis  
Terri and John Dell  
Michael Dennett  
Christie Denton  
Kathleen and Robert Deubell  
Susan and Paul Diekmeyer  
Tammy Dietz  
Kathleen Doane  
Megan Donley  
Ruby Downie  
Scott and Christine Easley  
Crista Eberhart  
Kelsey Eilers  
Tal Einav  
Jennifer Ellis  
Nicole Everett  
Mary Milton Fanthorp  
Suzanne Fisher  
Anna Flory  
Laura Foote  
Arthur Forbriger  
Joyce V. Frame  
Rob Franek  
Gregrick Frey  
Angela Fugate  
Virgil Gaines  
Dillard Gay  
Jeffrey L. Geoberti  
Sujata Ghate  
Lakeisha Gibbs  
Matthew Goedde  
Pamela and Gary Goetz  
Leidy Gonzalez  
Kelly Gould and Sharon Bresser Varias  
Kim Graham  
Stanford Grantham  
Teddy Gumbleton  
Evelyn Guzman  
Greg Haenig  
Margaret Hagar  
Nicholas Haggmark  
Cathy Hale  
Howard Hale  
Yolanda Hall  
Laura Harrell  
Greg Harris  
Jennie Hefren

Marcia and Paul Hendrick  
 Kellen Hicks  
 Kris Hicks  
 Travis Highley  
 Rosemary Hill  
 Kelly Hiltibrand  
 Beverly Hittle  
 Cindy and Gregory Hoard  
 Leah B. Hoehstetter and Ray Owens  
 Meredith Hoefle  
 Anna Hogan  
 Sheila Horstman  
 D'Vaughn House  
 Chad Houston  
 James Huber  
 Nancy Huck  
 Leo Henry Hudson  
 Tammie Hung  
 Charlotte Ingram  
 Moriah Israel  
 Jamie Jackson  
 Paula Jackson  
 Nancy and Michael Jamison  
 Brian K. Jaynes  
 Shawn Jeffers  
 Alexandra Jennings  
 Sheila Johnson  
 Teresa Johnson  
 Annette Jones  
 Jeffrey Jones  
 John Jones  
 John Jones II  
 Michele Kay  
 Paige Keefe  
 Georgette Kennebrae  
 Gina Kern  
 Laurel Kincaid  
 Kings Daughters  
 Allie and Julie Kist  
 Amy Knipp  
 Danielle Knox  
 Kelly Knox  
 Steve Krieger  
 Eileen Kues  
 Rick Kuethe  
 Ron Lanham  
 Heather Lawson  
 Ngan Diem Le  
 Renee and Bradley M. Lemberg  
 Daniel J. Ley  
 Patricia Linhart  
 Lisa Link  
 Molly Little  
 Terrell Lockett  
 Joanna Lounsbury  
 Tonia Lower  
 Marc Loy  
 Christian Lucke  
 Marcia and Robert Lukin  
 Joshua Lutts

Helene and Millard H. Mack  
 Brian Magnarini  
 Deborah Mann  
 John Mann  
 Michael Marcotte  
 Connie Mason  
 Emily Mather  
 Gary Matthews and Beverly Welbourne  
 Cait McBee  
 Holly McClelland  
 Tanja McDowell  
 Jennifer McEvilley  
 Katie McGeorge  
 Candace and William McGrath  
 Florence McGraw  
 Tammy McKay  
 Logan McLeod  
 Pamela McWhorter and Timothy Finnerty  
 Carol Meinhardt  
 Chris Messick  
 Helen Meyer  
 Richard Mezger  
 Mindy Miller  
 Sydney and Jeffrey Miller  
 Erica Minton  
 Zarinah Mitchell  
 Jody Moran  
 Leslie Moschini  
 Edward and Elizabeth Mount  
 Lilamae Mueller  
 Michelle Mueller  
 Sarah Murphree  
 Sam Naser  
 Kesha Nelson  
 Dylan Neu  
 Joshua Neumeyer  
 Linda Niesen  
 James Norris  
 Asia Nunez  
 Ruthie Ober  
 Chris and Jenna Odom  
 Debbie Oliva  
 Carole and Richard M. Oliver  
 Melissa O'Moore  
 Danny Parsley  
 Jill Parsons  
 Waltke Paulding  
 Dianna Penna  
 Joy Pierson  
 Taylor Poe  
 Deborah Polhamus  
 Ethan Pope  
 Pam Priddy  
 Aik Khar Pung  
 Eric Puryear  
 Lucy Putnam  
 Bernardita and Pedro Rademacher  
 Gregory Rasp  
 Mary Kay Rehard  
 Bernard Richard

River Bears Cincinnati, Inc.  
 Amy Roberts  
 Reid Rooney  
 Rike Rothenstein  
 Alynn Rousselle  
 Andrew Ruffner and David Weaver  
 Amy and Paul Russ  
 Timothy Rutherford  
 Bethany Sandberg  
 Amy Sanders  
 Mark Santanello  
 Kristen Sarver  
 Russell C. Sawmiller Jr.  
 Elna Saxton  
 Tommy Scandura  
 Chris Schadler  
 Lauren Schaeper  
 Susan Schlueter  
 Lynne Schmitt  
 Leigha Schneider  
 Julie L. Schwanekamp  
 Bob Scott  
 Tonya Scott  
 Jessica Shambaugh  
 Austin Shelton  
 Michael Shockley  
 Elaine Sicking  
 Debbie Silance  
 Willie Simeton  
 Mike Singleton and Julie Maines  
 Rashida Slater  
 Junius Smith  
 Susan and David Lee Smith  
 Catherine Sniderman  
 Jason Snodgrass  
 Steve Sosby  
 Antoinette and Bob Sprinkel  
 Joe Suer  
 Hagit and Jeffrey Sunberg  
 Terry and Stuart Susskind  
 Seth Sweatt  
 Donna Szostak  
 Robert Tate  
 Michelle Taylor  
 Stephanie Taylor  
 Robert P. Temmen  
 Leah Terhune  
 Catherine Terrell  
 Mari Thomas  
 Marsha Tiffany  
 Holly Tumbleson  
 Maddie Jane Varias  
 Rick Velasco  
 Karee Venema  
 Lauren Verdile  
 Lauren Vogel  
 Tim Vonderbrink  
 Marian Weage  
 Brad Wenstrup  
 Laura Werts

Allison Wesdorp  
 Yolanda Y. Wess  
 Larry Whitakey  
 Rian White  
 Thomas Wible  
 Blossom and Chris Widmer  
 Cassandra Widner  
 Thomas J. Wiethorn  
 Gwen Wilder  
 Ashley Will  
 Rev. Wilson Willard Jr.  
 Paige Williams  
 Matthew Witherspoon  
 Katherine Wolf  
 Mike Wood  
 Shelly Woodward  
 Ty Worthy  
 Diane Wright  
 Boris Yanovsky  
 Ming Ying  
 Jacqueline Young  
 Rachel Zawila  
 McKenzie Zimmerman

## IN-KIND CONTRIBUTIONS

### GOLD LIVING CIRCLE

\$5,000+  
 Citi Florence  
 Enriching Spaces/ISI  
 Macy's  
 Jeff Thomas Catering

### SILVER LIVING CIRCLE

\$2,500-\$4,999  
 Carol and Victor Dipilla  
 Galerie  
 Annette Navarro  
 Steve Peele, Jr.  
 Phillip Saunders

### BRONZE LIVING CIRCLE

\$1,000-\$2,499  
 Christ Church Cathedral  
 Cincinnati Arts Association  
 Kathy Comisar  
 Everybody Rides Metro Foundation  
 Fedders Feed & Seed  
 Clyde Gray  
 David C. Herriman  
 I.S.Q.C.C.B.E.  
 Gina Kern  
 Scott Knox and Ray Pater  
 Thomas Levack and Sarah Jane Bellamy  
 Luxottica  
 Ryan Messer and Jimmy Musuraca-Messer  
 St. Columban Church  
 Towne Properties

## BENEFACTOR

\$500-\$999

Ina Broeman  
Wendy and Scott Carpenter  
Cockerill Gallery  
Mary Ellen and Tom Cody  
Guests of Freeman Durham and Dean  
Clevenger's Winter Solstice Party  
Mark Haggard and Dan Brown  
John Keller  
Bernard McKay and Zack Weber  
Liam O'Connell Photography  
Stephen J. Peterson and Christopher Bolling  
Spiros Sarakatsannis, Jerry Freed Alex Smith  
Catherine Smith  
Spring Grove Cemetery  
Toyota Motor Engineering & Manufacturing  
North America, Inc.

## FRIEND

\$1-\$499

An Anonymous Friend  
21c Museum Hotel Cincinnati  
Alliance of Kroger  
Jane Anderson  
Ron and DC Bails-Forbes  
Jerry Bedford Jr.  
Below Zero Lounge  
Carolyn Benedict  
Connie and Dave Berkemeier  
Steve Bolia and Rob Dorgan  
BonBonerie  
Melody Bravard  
Becky Brown  
Doug Bruestle  
Michael D. Butler and Dale Murray  
Thomas Caito  
Dave Callan  
Adam Case and Mike Volmer  
Cincinnati Opera  
Cincinnati Playhouse in the Park  
Cincinnati Symphony Orchestra  
CoCo Creative Wellness  
College of Mount St. Joseph  
Jayna Cook  
Karen Cormier  
Wayne Crabtree  
Jeffrey Raven Wing Crawford and John Dunn  
Day of Caring 365  
Denise Deitemeyer  
Dewey's Pizza  
Dixie Chili, Inc  
DJ Julie Boogie  
Paul Dunlavy  
Freeman Durham and Dean Clevenger  
Christine and Scott Easley  
Jerry Edens  
Eli's BBQ  
Shay Eskridge  
Mark Essex

Judith Feinberg  
Melissa Belle Ford  
Thomas Freeman and Doug Klocke  
Frisch's Restaurants Inc  
Future Life Now LLC  
Ginny and Dennis Gesenhues  
Charles and Pat Giglia  
Jim Goetz and Harry Budke  
Graeter's  
Jaime Greathouse  
Jill Guilfoile  
Sean Guilfoile and Daniel Shiveley  
Habit's Cafe  
Kelli Halter and Mark Masters  
Jon M. Hargett and William Carson  
Jolie Harris and Steve Russell  
Kate Harrow  
Dennis and Shirley Hartke  
Midge and John Hines  
Sheila Johnson  
Amy Lynn Jones  
Dan and Pamela Jones  
Robert A. Jones  
Joseph-Beth Booksellers  
Just Bob's  
Lois and Dick Kay  
Rick Kay and Jim Kelly  
Liz Keuffer  
Thomas Koeninger  
Lakeview United Church of Christ  
Lawrenceburg Speedway  
Corinne Lehmann and Jon Calderas  
Jason and Jeannie Leo  
Pet Wants  
Keith Lindsay  
Edward Loftspring  
Al Lutz  
Macaron Bar  
Henri Maicki  
Pam McFarland  
Joshua McShane  
Leslie and Mike Mitchell  
Benjamin and Andrew Morano  
Lilamae Mueller  
Tom Murray  
Tony Newman and Charles Lain  
Jeffrey Niemes and Craig Cooper  
Jennifer and Patrick O'Donnell  
Matt Oelrich  
Old Street Saloon  
Mark Palkovic and Thomas Shessler  
Matt Parker  
Patty's Old Fashioned Popcorn  
Penzey's Spices  
Daniel LaMar Pillow  
Penny Poirier and Tim Smith  
Joseph Previte and Andrew Bell  
The Procter & Gamble Company  
Margaret Quinn  
Chrissy and Francisco Rademacher

Sandra Reed  
Samantha Reilly  
Adam Reilly  
Travis Rembis  
Rodney Richer and Brian Reedy  
River Bears Cincinnati, Inc.  
RJ Fitness  
Road ID  
Amy Roberts  
Salon Gorgeous  
Pat and Sam Schloemer  
Mary and Robert Schneider  
David Schwei  
Scorpius of Cincinnati  
Seasons 52  
Second Trinity Baptist Church  
Kent Shaw and Jeff Thomas  
Sidewinder Coffee  
Ellie and Matt Singleton  
Alison Smock  
SONS  
SOTO Salon on the Ohio  
Mary Sowers  
Connie Spitzer  
Beth Swaney  
Taste of Belgium  
Larry Tensi  
Timothy's Florals  
Timothy's, A Spa  
Tom+Chee  
Terry C. Tracy  
Tri State Leather  
TriHealth  
UC Academic Health Center  
Kelly and Guy Vanasse  
Susan and Colin Vogt  
Michelle Watts  
Nicole Welch  
Blossom and Chris Widmer  
Jan Wolf  
Ann Wuertenberger

## Gifts were made in honor of:

Jesse and Keli Albertson  
Carol Boymel  
Bill Chappie and Scott Allgye  
Jamie Cornish  
Chuck Craig and Bob Hurst Craig  
Wes Duncan  
Marilyn Feldman  
John Gillespie  
Mary Gimpel  
Megan Green  
Paul Gronck and Steve Hebling  
Jon Hargett  
Midge Hines  
Judith Holcombe and James Diegido  
Beth Holzer-Wilson  
Roger Lambert  
Bruce Lazarus and Phil Weintraub  
Toni and Neal Morris  
Christopher and Beth Oligee  
Kevin and Marci Oligee  
Michael Oligee  
Rick Oliver and Michael Kelley  
Stephen Peterson  
Chrissy Rademacher  
Ruth Richardson  
Heather Schumaker  
Ellie Singleton  
Jeff Thomas  
Sally Vandyne  
David White  
Ashley Will

## Gifts were made in memory of:

Edward G. and Ned Austin  
Barry Guilfoile  
Wilbur New  
Douglas Oligee  
Worley Rodehaver  
Charles Schaffner  
Sheba



Participants crossing the finish line after our 5K for AIDS.



4138 Hamilton Ave. • Cincinnati, OH 45223  
513.761.1480 • [caracole.org](http://caracole.org)

Non-Profit  
U.S. Postage  
PAID  
Cincinnati, OH  
Permit No. 4959

## PLEASE JOIN US!

Caracole hosts many events throughout the year. For more information about upcoming events, visit [caracole.org](http://caracole.org) or [facebook.com/caracolecincinnati](https://facebook.com/caracolecincinnati)

### **MISS NORTHSIDE DRAG PAGEANT**

**Sunday, April 17, 2016**

Below Zero Lounge

### **CARACOLE'S 5K FOR AIDS**

**Sunday, May 15, 2016**

Spring Grove Cemetery and Arboretum

### **ANNUAL MEETING**

**Thursday, April 21, 2016**

Fifth Third Convening Center,  
United Way of Greater Cincinnati

### **CINCINNATI PRIDE PARADE AND FESTIVAL**

**Saturday, June 25, 2016**

Downtown Cincinnati

### **NORTHSIDE FOURTH OF JULY PARADE**

**Monday, July 4, 2016**

Northside

### **PARTY IN PLAID AND PUNK**

**Saturday, August 27, 2016**

Cincinnati Masonic Center

### **CHRISTMAS TREE SALE**

**Weekends, Thanksgiving to Christmas**

Findlay Market

### **WORLD AIDS DAY**

**Thursday, December 1, 2016**

FUNDED BY  
city of  
**CINCINNATI**

